

MIDDLESEX

COUNTY COLLEGE



Planning

2011-2012
ANNUAL REPORT

SUCCESS STARTS HERE

A YEAR IN REVIEW



From the President

The Year in Review

This publication will acquaint you with College programs, services and people. The 2011-2012 Academic Year was significant for Middlesex County College in many ways. Importantly, we took an assessment of our 2009-2012 Strategic Plan and began to develop strategic goals for 2012-2015. To plan further out, we also engaged in a Master Plan to look ahead to 2022.

In November 2011, the College Board of Trustees approved a contract to conduct the Master Plan. In January 2012, we began an environmental scan of state, federal and local resources. Meetings were held across campus with faculty, staff and students. Community and business leaders including alumni and agencies with ties to the College also informed the demographic review and projections for jobs and an educated workforce. By the end of March a space analysis was completed and in April the consultants presented a draft of the Master Plan to the Board of Trustees that included three major components: a facilities plan to accommodate programs and services, an educational plan to expand degree and certificate offerings, and a facilities condition assessment to plan for the maintenance and future use of more than 25 buildings on the campus.

The Master Plan will be shared during the early months of 2013 and I look forward to further discussion and implementation as we begin our work on the 2012-2015 Strategic Plan. Here are the five strategic goals that have been set. I welcome your suggestions and involvement in helping to attain them.

- Goal 1:** Expand and modify educational offerings to meet the changing needs of the job market/industry and the increasing non-traditional student population.
- Goal 2:** Explore, identify and implement different delivery systems and teaching modalities
- Goal 3:** Monitor demographic and economic changes to provide quality educational opportunities responsive to the changing needs of the community.
- Goal 4:** Provide a physical and virtual environment that supports changing student needs.
- Goal 5:** Provide a physical and virtual environment that assists College employees in meeting the needs of the campus community.

Thank you for your interest and support of Middlesex County College.



Joann La Perla-Morales
President

SUCCESS STARTS HERE

PROFILE



Phil Levenfus '03

When Phil Levenfus was 13 years old, he came down with mononucleosis. Complications set in and he was housebound for a year.

What's a 13-year-old to do when he has nothing to do and no energy with which to do it? He watches TV. Phil developed an infatuation with the Cooking Channel.

"I was hooked," he said. "Since then, that's all I really wanted to do."

Phil came to Middlesex and took classes while working at several Hilton Hotels. He graduated in 2003 and continued working there, joining Wegmans two years later.

"I was lucky," he said. "I got the chance to work at the Woodbridge store." He transferred to the Bridgewater location and was promoted a few times. He was then selected for the company's management training program and is now executive chef there.

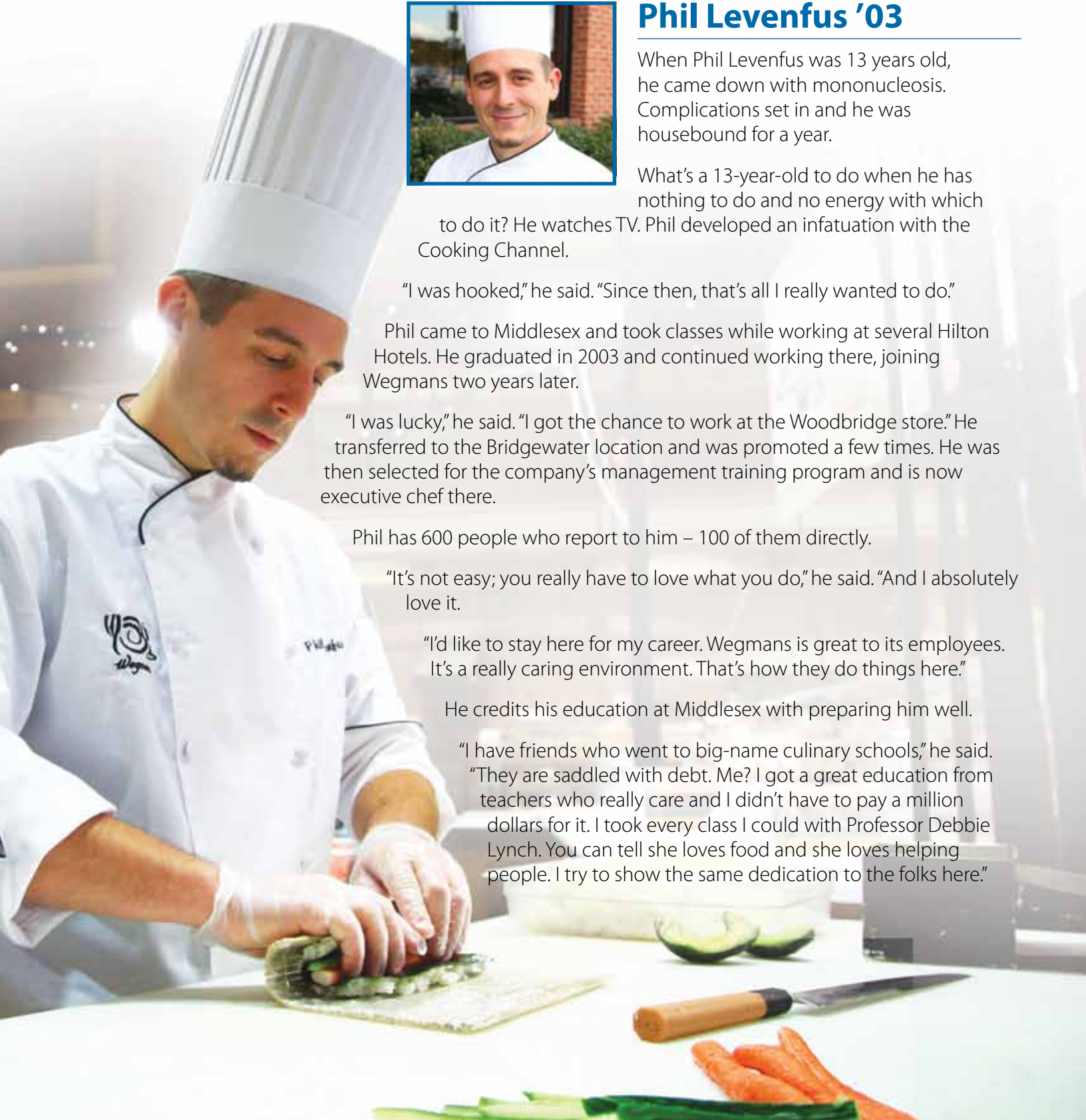
Phil has 600 people who report to him – 100 of them directly.

"It's not easy; you really have to love what you do," he said. "And I absolutely love it.

"I'd like to stay here for my career. Wegmans is great to its employees. It's a really caring environment. That's how they do things here."

He credits his education at Middlesex with preparing him well.

"I have friends who went to big-name culinary schools," he said. "They are saddled with debt. Me? I got a great education from teachers who really care and I didn't have to pay a million dollars for it. I took every class I could with Professor Debbie Lynch. You can tell she loves food and she loves helping people. I try to show the same dedication to the folks here."



YEAR IN REVIEW

From July 1, 2011 through June 30, 2012, Middlesex County College was a hub of activity. These entries, covered in more detail in "Middlesex Now," the College's magazine, give a taste of what happened last year. It was a busy, productive, exciting year.

July 2011

6204 students enroll in six different summer sessions.



July

Middlesex County Senior Art Exhibit and Contest opens.



September 12

The Alumni Association and Democracy House, the College's Service Learning program, combine to collect food for M.C.F.O.O.D.S. (Middlesex County Food Organization and Outreach Distribution Services) during the Student Activities Fair.

September 22

The Center for the Enrichment of Learning and Teaching (CELT) offers a workshop for faculty, the first of 31 programs it would run during the academic year.

August 18

Kids in the MCC childcare center enjoy Field Day, including pony rides and a petting zoo.



September 6

First day of fall semester.

September 15

MCC begins Hispanic Heritage Month celebration.

September 23

TSC is named Billy Johnson Hall; Betty Wold Johnson presented L'Hommedieu award.

YEAR IN REVIEW



October 13

Smiles mix with learning as the Edison Fire Department promotes fire safety at the Health and Safety Fair. The annual program at the College features human service and safety agencies that visit campus to help students, faculty and staff learn about how to make their lives healthier.



October 19

Democracy House hosts forum on poverty.

November 6

College holds open house.

October 28-29

Lustig Dance Theatre performs.

October

"Disillusions: Gendered Visions of the Caribbean and its Diasporas," opens at the Studio Theatre Gallery.

October 5

Professor Emanuel di Pasquale signs copies of his new book, "Harvest."



October 31

The MCC chapter of Phi Theta Kappa, the international honor society for two-year colleges, organizes a walk to support breast cancer research.



October 4

More than 100 students interested in volunteering meet with nonprofit organizations at Democracy House's Service Fair.



November 7

Mary Tutalo, assistant director of the Blue Colt Bookstore, is elected president of the Middle Atlantic College Stores, an organization of more than 100 school stores and 120 vendors in New Jersey, Delaware, the District of Columbia, Maryland, Pennsylvania and West Virginia.



November 9

Vice President Karen Hays named Central Jersey Woman of the Year.

November 16

Phi Theta Kappa inducts 95 students.

November 17

The MCC Foundation annual meeting, which includes revised bylaws.

November 9

Career Services holds job fair.



November 14

Board of Trustees annual reorganization meeting.

November 17

A reception to celebrate the opening of "Reframe: New Compositions for Old and Found," an art exhibition in which four internationally known artists incorporate items they have found into their work.



YEAR IN REVIEW



November 29

Fourth edition of the MCC literary journal is published.



December 1

Professor Shirley Russak Watchtel signs copies of her new book, "My Mother's Shoes," at the Blue Colt Bookstore.

November 29

Celebrity Chef Tod Wilson, owner of Mr. Tod's Pies, visits Professor Ralph Tellone's class to tutor the students on the best way to make delicious pies.



December 8

The MCC faculty and staff holiday party includes a food drive that collected hundreds of pounds of food, which is donated to M.C.F.O.O.S. (Middlesex County Food Organization and Outreach Distribution Services).



PROFILE



Mansur President '03

Mansur President uses both sides of her brain.

Ok, ok, we all do. But in her case maybe it just seems more pronounced. Her day job is as director of the North American Corporate Action Team for Morgan Stanley. She deals with mergers and acquisitions, securities and the like. She can crunch numbers with the best of them. But she's also spent much of the past 10 years working in the social work field, helping people in need. And now, she volunteers every chance she gets.

Mansur was a campus leader when she was at MCC. Along with fellow student and friend, Neesa Joseph, she founded the MCC chapter of the National Society of Black Engineers, the first chapter at a community college in the nation. She worked in the Minority Access to the Professions Program, and served as a mentor to younger students. She also received the MCC Foundation's Sam Landis Endowed Scholarship.

After graduation, Mansur went to NJIT and took a double major in business and finance. All this time she was working as a social worker at Franklin House, a sanctuary for homeless single mothers. She graduated in 2007 and went to work for Morgan Stanley in Manhattan. She was recently promoted and is now working in Baltimore.

"It's extremely interesting work," Mansur says. "I really felt MCC prepared me very well. I received lots of support and the classes were excellent. If MCC ever offers graduate degrees, I'll be back in an instant."



YEAR IN REVIEW



December 14

Center for Veterans Services officially opens with a ceremony.

January 23

First day of Spring semester.

February

Professor Ben Marshall receives a \$10,000 grant from the New Jersey State Council on the Arts.

December 15

The College fashion club, called "We Set the Trends," holds its fashion show.

December 27

840 students enroll in Wintersession, a concentrated semester over the break.

January 19, 2012

College honored by New Jersey Blood Services and New Jersey Devils: various departments and clubs ran drives that collected 256 pints of blood.



February

College celebrates Black History Month with lectures, films and trips.



February 5

Self:Scape art exhibit opens.



February 7

"Pink Day," in which the MCC and Ocean County College basketball teams support Breast Cancer Awareness, is held at Middlesex.

February 2

Dental Hygiene Department helps give kids a smile with free dental care.



February 25

Wrestler John McArdle wins the National Championship in the 184-pound weight class. MCC came in ninth overall and third among non-scholarship teams.





Ron Rubanick

The call would come in at 3 a.m. It might be the 4th of July, Christmas or Thanksgiving. A groggy Ron Rubanick would wake up, rub his eyes and go to the docks. There he would meet a cargo ship coming in laden with food additives or chemicals. He would test them, send the results to the lab, and wait with the ship, sometimes as long as 48 hours.

"It was horrible," he said. "I needed a change."

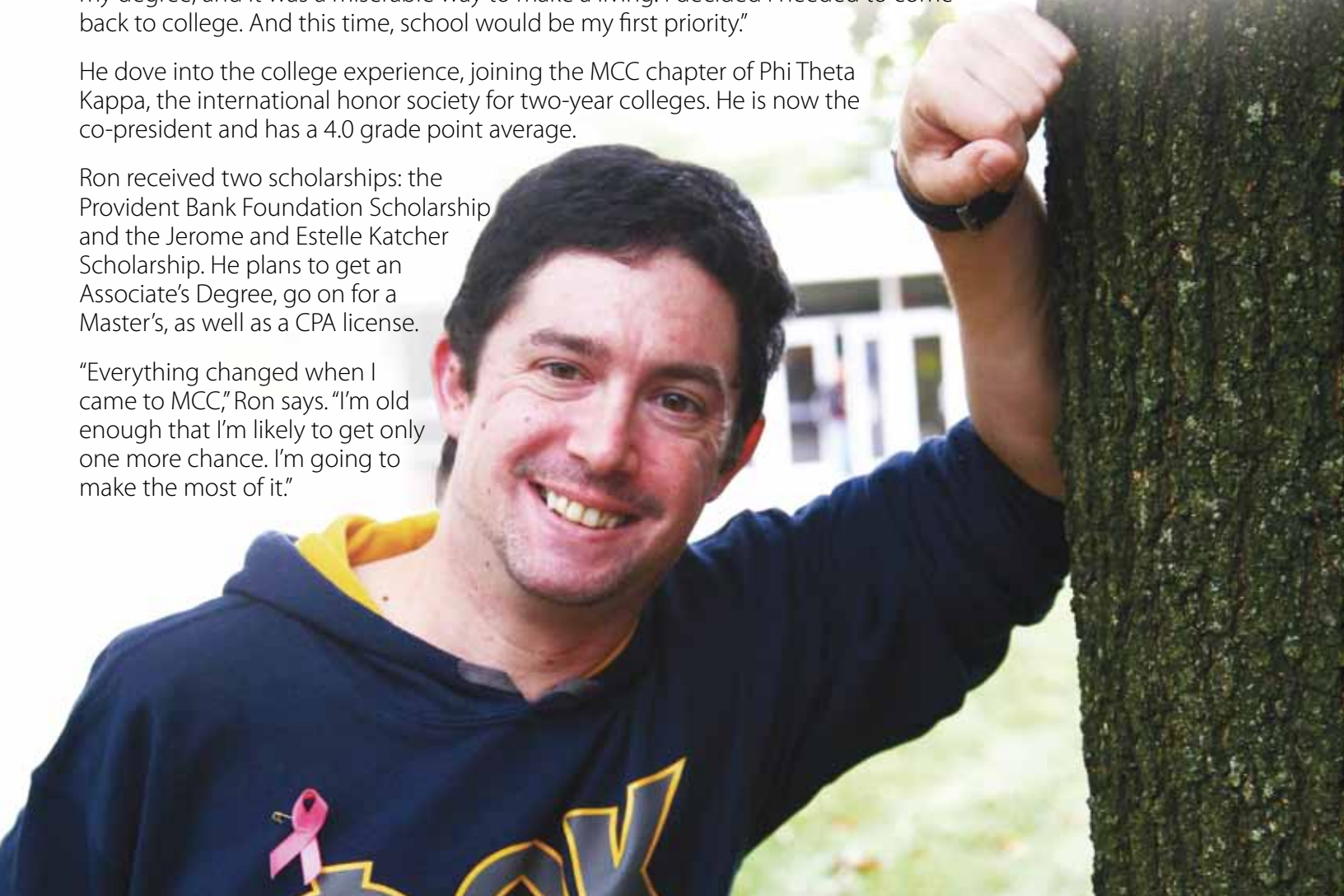
Ron Rubanick graduated from Woodbridge High School, and right away went to college for a year. He freely admits he partied too much. He then transferred to Kean University. He liked Kean, and did well, graduating in 1999 with a B.S. in business. He worked in retail for a time, and then took the job in the chemical industry, testing imports.

"I woke up one morning and said 'I don't want to do this anymore,'" he remembered. "I wasn't using my degree, and it was a miserable way to make a living. I decided I needed to come back to college. And this time, school would be my first priority."

He dove into the college experience, joining the MCC chapter of Phi Theta Kappa, the international honor society for two-year colleges. He is now the co-president and has a 4.0 grade point average.

Ron received two scholarships: the Provident Bank Foundation Scholarship and the Jerome and Estelle Katcher Scholarship. He plans to get an Associate's Degree, go on for a Master's, as well as a CPA license.

"Everything changed when I came to MCC," Ron says. "I'm old enough that I'm likely to get only one more chance. I'm going to make the most of it."



YEAR IN REVIEW

March

College celebrates Women's History Month.



March 5

New Scholarships Office opens.

March 6

Panel of distinguished authors discusses baseball literature.

March 3

MCC holds scholarship gala.



March 13

The state finals of the Science Olympiad are held on campus. About 1100 middle and high school students took part in dozens of competitions designed to test their abilities in science. The winners are Community Middle School and West Windsor-Plainsboro South High School.

March 20

Graduation Fair provides convenient way to complete graduation procedures.

YEAR IN REVIEW



March 23

About 80 young men from area high schools participate in a conference designed to provide the resources, knowledge and tools to help them make good decisions as they become men. The program, "Boys to Men: Decisions Made Today Define My Tomorrow," was sponsored by the Middlesex County Office of Human Services Division of Addictions & Mental Health Planning, along with MCC's Office of Minority Student Affairs.



April

The College's Fashion Club collects prom dresses to give to high school girls who may not be able to attend their prom otherwise.

April 9

Culinary students learn the art of ice carving in the garde manger class.

April 4

Robert Oras, a retired law enforcement professional, is named to the College Board of Trustees.

March 25

College holds open house.

April

College celebrates Festival of Arts and Sciences with speakers, films and trips.



April 2

The Annual Visual Arts Student Exhibition shows the creative work of students taking studio art courses at the College.



April 17

The Dental Hygiene Department offers oral cancer screening for the community.



April 19

As a community service project, Democracy House cleans the environmental park on campus and installed birdhouses.



April 21

Forty-two students in Professor Claire Condie's classes volunteered to clean the Laurence Harbor Waterfront Park. The program was organized by Clean Ocean Action, a nonprofit dedicated to improving the quality of marine waters off the New Jersey and New York coasts.

April 18

The MCC chapter of Phi Theta Kappa, the international honor society for two-year schools, inducts 63 students.

April 19

Two outstanding professors are honored: Maya Aloni, in the History and Social Science Department, is selected as the 2012 Faculty Scholar; and Claire Condie, of the Natural Sciences Department, receives the 2012 Excellence in Teaching Award.



YEAR IN REVIEW



April 25

MCC Alumni Association holds fourth restaurant food tasting, called "An Evening of Good Taste for the Educated Palate." It is a scholarship fundraiser.

April 26

Students in MCC speech classes compete for cash prizes awarded by Pearson Publishing Company.



May 10

The men's basketball team is honored by the New Jersey Red Hawks, an athletic program for young adults with developmental disabilities. The MCC team ran a workshop during the season, in which they taught dribbling, passing and shooting skills. In May, the Hawks returned to the campus to present awards to the MCC squad: autographed team photos. The MCC team also conducted a brief clinic and ran a scrimmage.

April 26

College presents awards to students active in clubs and campus organizations.



May 3

College holds golf outing to raise money for scholarships.

May 11

Three MCC employees are cited for outstanding service to the College during Celebration Day. Evan Swan receives the award for adjunct faculty; Veronica Geruldsen of printing and communications support for staff, and Mary Tutalo of the College Bookstore for administration. In addition, Professor Mat Spano '88 of the Department of English, is named the 2012 Alumnus of the Year for service to the College.

PROFILE



Adrian Liz '12

Adrian Liz fell in love at Middlesex County College.

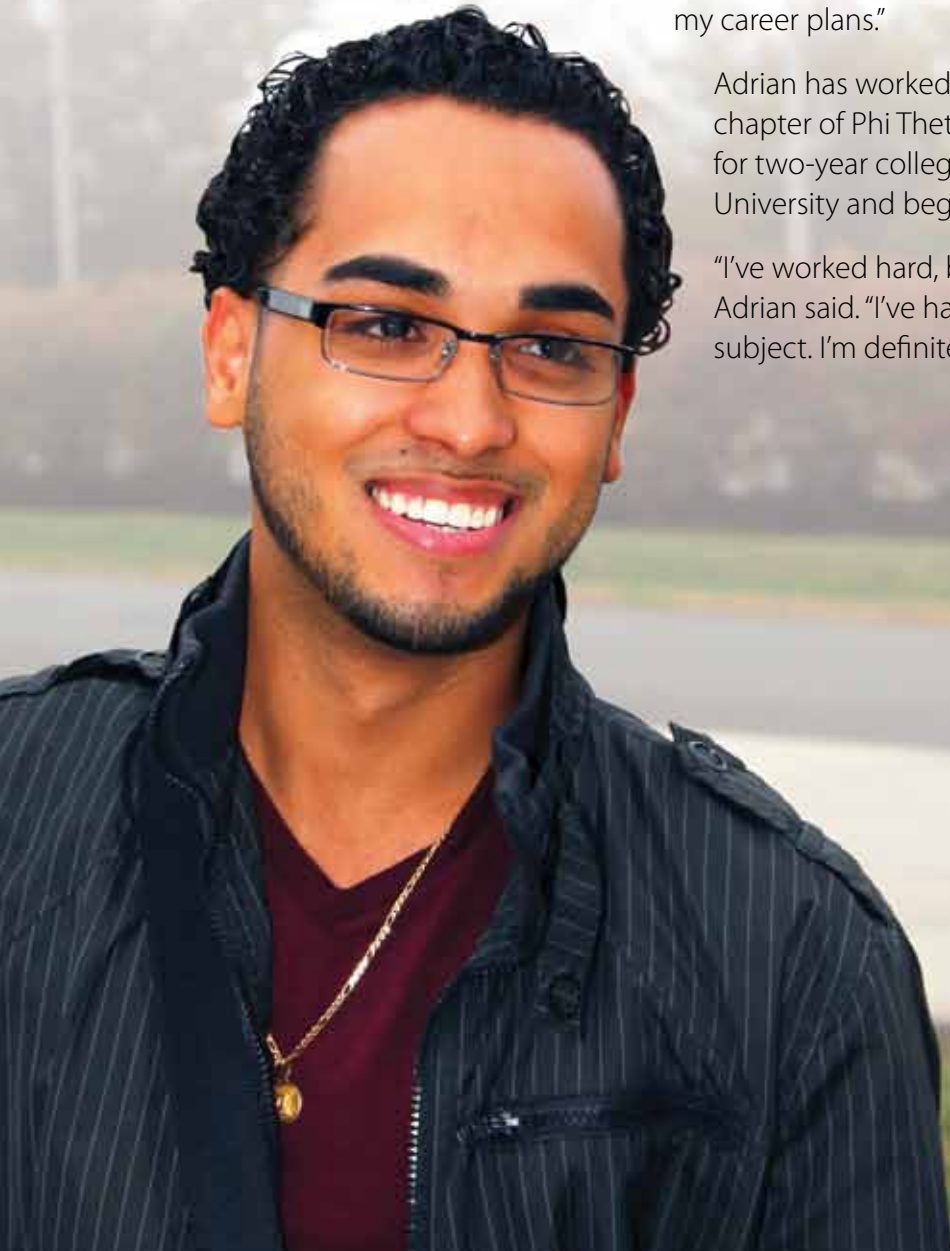
With economics.

Originally, he had planned to come to MCC, major in business and become an accountant. Then he took economics with Professor Brian de Uriarte.

"I fell in love with economics," Adrian says. "He was very passionate about the subject and he makes it so clear. He was very influential in my career plans."

Adrian has worked hard and was accepted into the College's chapter of Phi Theta Kappa, the international honor society for two-year colleges. He was also accepted at Rutgers University and began there in January.

"I've worked hard, but I've had a lot of support at the College," Adrian said. "I've had great professors who really know their subject. I'm definitely prepared to go on to Rutgers and beyond."



YEAR IN REVIEW

May 15

Sixty-six nursing students receive their pins at a ceremony.



May 23

College athletes honored at sports banquet.

June

The Center for Veterans Services holds a clothes and food drive to benefit military veterans in the area. They collected more than 100 articles of clothing and 40 pounds of canned goods from the College community, which was donated to the Salvation Army's Care House Emergency Shelter for Veterans in Perth Amboy.

June 7

Michelle L. Foley, nursing director, named "fellow" of the National League for Nursing.

May 17

Commencement: 1458 degrees and certificates awarded.

June 2

College President Joann La Perla-Morales receives Distinguished Alumna Award from her alma mater, the State University of New York College at Oneonta.



June 7

Seize Success, a program to promote the College's academic programs to the community, is held.



June 14

Alumni Association presents Recent Alumna of the Year award to Michele Sutera '08, and scholarship awards to Tara Marlowe and Karina Oddo.

June 18

Vice President Karen Hays receives the Spirit Award from New Jersey Council of County Colleges.

June 12

MCC business student Jessica Jansen receives scholarship from Edison Chamber of Commerce.

June 27

The Edison Arts Society honors MCC for its beautiful campus, with The Gracious Grounds Award. The award is presented annually to an organization that helps beautify Edison.





Kathy Liseno

Annamae Baerenbach was a lovely woman, very personable, with a sharp Irish wit. She was a hard worker and had a way with people that made her well liked and respected in the banking industry. She had joined Metuchen Savings and Loan after her children had grown, and she worked there for 27 years. She was very involved in the Edison Chamber of Commerce and with trade associations.

When she passed away in 2006, her colleagues were devastated.

"You don't find people like her very often," said Kathy Liseno, the bank president. "She touched many lives. We felt we wanted to do something special to honor her memory. Annamae cared about people so much and she was always trying to help them start their career. We thought the best way to remember her was to create a scholarship to help MCC students."

The Metuchen Savings Bank/Annamae Baerenback Memorial Scholarship was born.

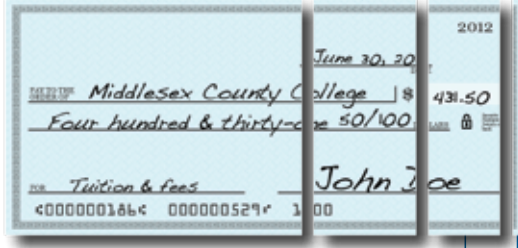
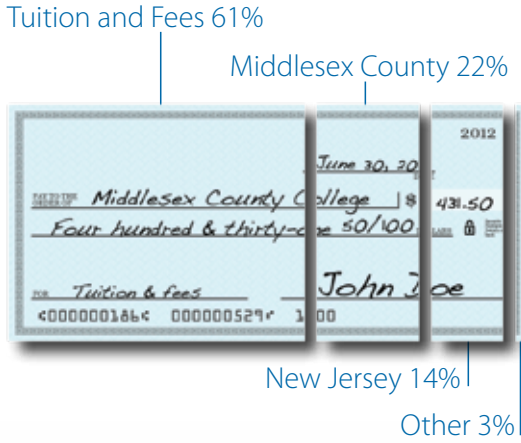
Now in its seventh year, the scholarship helps support a second-year business student from Metuchen or Edison pursuing a degree in business.

"I love meeting these students," Kathy said. "I love their enthusiasm and am so happy we can help. It is heartening to know that you can make a positive difference in someone's life."



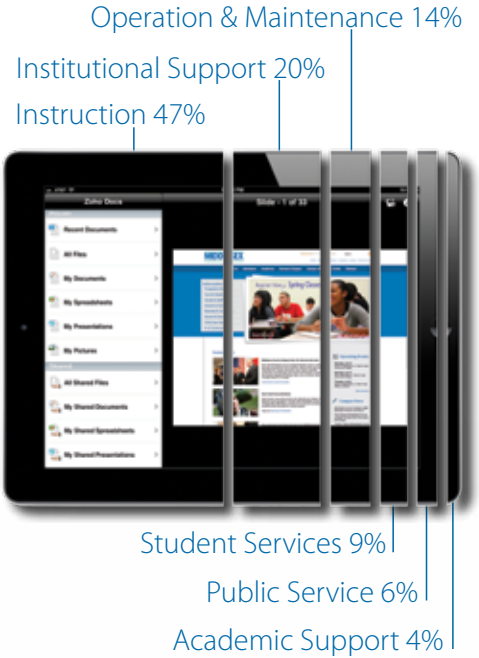
Middlesex County College Finances

2012 Operating Revenue



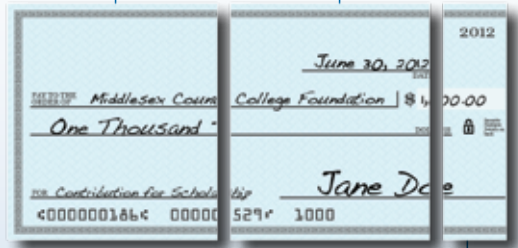
Middlesex County College's Total Operating Budget for Fiscal Year 2011-2012 was \$79,071,662.

2012 Expenditures



Middlesex County College Foundation

2012 Contributions



The Middlesex County College Foundation's Total Contributions for Fiscal Year 2011-2012 were \$916,093.

2012 Support



FOUNDATION

Spring is a wonderful time to walk around campus: the sun beams low on lawns and buildings, several hundred trees shimmer with new leaves, and the rich diversity of more than 12,000 students invigorates the crisp, cool air. Those of us with office-based positions do well to take a daily walk around our scenic campus – it provides pleasant outdoor exercise and energizes our workflow. But, most importantly, it puts us in close proximity with our students and reminds us that, no matter what our specific role may be, we are all here to help our students achieve their academic and career goals.

The Middlesex County College Foundation (MCCF) is an independent nonprofit organization, authorized by the Internal Revenue Service to solicit and accept private, tax-deductible donations. The Foundation was established in 1966 and, since that time, its assets have grown to over \$10 million. This sizeable sum of money is secured and allocated in several ways: in the form of endowed funds that exist in perpetuity to generate specific scholarships; in named annual scholarships that are solicited and awarded each year; and in general unrestricted support brought in from fundraising events and from our annual fundraising campaign, known as the Annual Fund.



Endowed funds and named annual scholarships make it possible for the MCC Foundation to provide consistent scholarship support, but these awards are generally restricted to students who meet highly specific criteria. It is the Annual Fund—the unsung hero of most nonprofit organizations—that helps the Foundation provide scholarship awards for a much wider variety of students. Annual Fund donations—large and small—become part of a general unrestricted fund and make it possible for us to help many deserving students receive much-needed financial support.

We know Middlesex County College students are smart – they have already made the wise decision to complete the first two years of college at a much lower cost than going straight to a four-year institution. But for many men and women, the cost of attending college is increasingly stretching beyond their grasp, and we know that beneath the sunshine and shimmering trees, there are stories of hardship, disappointment and deferred dreams.

Please help us help our students by making a donation to the Annual Fund. You may use the envelope included in this publication, make a gift online at www.mcc-foundation.org or call 732.906.2564. Or take a walk around campus and visit the MCC Foundation office at 111 Hof Road, where we will be delighted to accept your donation. Thank you!

Veronica Clinton
Executive Director,
Middlesex County College Foundation
vclinton@middlesexcc.edu

The 2012-2013 Annual Fund runs thru June 30, 2013

Johnson & Johnson: Supporting Students and Building a Workforce



In June 2012, the Middlesex County College Foundation received a generous grant of \$219,000 from Johnson & Johnson Family of Companies Contribution Fund. This outstanding support provided \$150,000 for the 2012-2013 Johnson & Johnson Health Technologies Scholarships and \$69,000 for the 2012 Summer Bridge/New Brunswick Program.

Johnson & Johnson Health Technologies Scholarships provide MCC with the opportunity to assist a growing number of students who wish to pursue their education to become healthcare professionals, specifically in nursing, dental hygiene, medical laboratory technology, and radiography. These graduates become part of our regional workforce or continue their educational pursuits to obtain a Bachelor's degree or higher. Johnson & Johnson scholarships significantly enhance opportunities for MCC students to achieve their educational and career goals in these health-related disciplines.

J&J's support for the New Brunswick Summer Bridge Program benefitted recent graduates from New Brunswick high schools, providing funding for student assistance, guidance programs, and developmental coursework for these high school graduates enrolled in the College's 2012 summer program as well as providing scholarships for participants who attend MCC throughout the 2012-2013 academic year. The generosity from Johnson & Johnson has a positive impact on current students as well as having a long-lasting impact on their future potential.

Corporate Mission Partner Program

Middlesex County College Foundation's Corporate Mission Partners help to enhance the Foundation's resources and capability to meet the increasing challenge of providing financial opportunities for students at Middlesex County College. Through support of annual events, our corporate partners help the Foundation fulfill its mission to assist a growing number of students in need of support to reach their educational goals.

**The MCC Foundation is tremendously grateful for their
loyal and generous support.**

Corporate Mission Partners:

Johnson & Johnson

The Provident Bank Foundation

Mission Partner:

Robert Wood Johnson University Hospital

FOUNDATION

Middlesex County College Foundation Gratefully Acknowledges our Generous Donors

July 1, 2011 through June 30, 2012

Founder's Circle (\$100,000+)

Johnson & Johnson
The Willard T.C. Johnson
Foundation, Inc.

Benefactor's Circle (\$25,000+)

Betty W. Johnson

Chairman's Circle (\$10,000+)

Johnson & Johnson - Matching Gifts
Paige B. and Elizabeth L'Hommedieu
Southpole Foundation, Inc.
Wells Fargo
Women's Rehabilitation Group of NJ

Trustees' Circle (\$5,000+)

Affinity Federal Credit Union
Janet A. Baker
Robert J. and Elaine Ciatto Family
Foundation, Inc.
Conoco-Phillips Bayway Refinery
Delta Dental of New Jersey
Foundation, Inc.
GlaxoSmithKline Foundation
Matching Gifts Program
Michael A. Maroney
Keith G. Mullane
Retail Services Corporation
Summit Associates, Inc.
Universal Mailing Service, Inc.
Wells Fargo Wealth Management
Jayne C. Zall

President's Circle (\$1,000+)

The Auxiliary of JFK Medical Center
Fdn., Inc.
Bristol-Myers Squibb Co. - Matching
Gifts
Brian J. Daugherty
Russell C. Deyo
ExxonMobil - Matching Gifts
ExxonMobil Chemical
Saul Fink
FKA Architects
Ronald Foley
GMB North America, Inc.
Heller Industrial Parks, Inc.
Highland Park Masonic Lodge #240
Free & Accepted Masons

Rush D. Holt and Margaret Lancefield
IBEW Local #456
Infineum USA L.P.
Investors Bank Charitable Foundation
The Irene Herbert Ross and Harper
Grant Ross Foundation
Joann La Perla-Morales
Linda J. Landis
Patrick S. Madama
Middlesex County College
Alumni Association
Metuchen Savings Bank
Kate Mittnacht
Frederick P. Montana
John P. Mulkerin
Susan K. Perkins
PNC Bank
The Provident Bank
Robert Wood Johnson
University Hospital
James Sausmer
Sodexo
Murray J. Stevens
TD Bank
The P&G Company
The Schenck Agency, Inc.
Mary E. Trickle
Verizon
Wakefern Food Corporation
Wells Fargo Educational Matching
Gift Program
Betty A. Whalen
Whispering Knoll
Wilentz, Goldman & Spitzer, P.A.
Withum, Smith & Brown, PC

Partner's Circle (\$500+)

Jean M. Battaglia
Barbara Berger
Barbara Bernard
Bollinger Insurance, Inc.
Veronica Clinton
Elizabeth R. Cofone
Diane Conboy
Brian De Uriarte
DMR Architects
Ernst & Young LLP
Fidelity Charitable Gift Fund
John J. Hogan
J. H. Cohn LLP
Audrey E. Johnson
Warren D. Kelemen
Thomas J. Kosten
L.R. Kimball
Charles T. Larsson

Middlesex County AFL-CIO
Labor Council
New Brunswick Tomorrow
Northfield Bank
Carmen Oshiro
Thomas J. Peterson
Mary N. Petti
Alice Picardo
Alan Sherman
Jerome Shindelman
Barry B. Shott
Ellen Shur
United Way of Bergen County
Wm. Wrigley Co. - Matching Gifts

Friend's Circle (\$250+)

Edmund O. Andich
Nancy G. Bailey
Xenia P. Balabkins
H. Wayne Brady
Creative Design Plus
Maria DeLucia
Donald R. Drost
David Edwards
Genette L. Falk
The Gillespie Group
Amanda Girardi
Ronald C. Goldfarb
Karen L. Hays
Pamela C. Hedberg
John A. Hoffman
Samuel C. Inglese
Cynthia Jankech
Marilyn Laskowski-Sachnoff
Valerie Latham
Paul J. Lazaro
Ricky Malkin
Susan McColley
Merck & Co - Matching Gifts
Mohawk Commercial Carpet
Morgan Stanley C/O Cybergrants Inc.
Richard F. Onyschak
Lawrence Piller
Norman Poppel
Dorothy K. Power
Prudential - Matching Gifts
Praful K. Raja
Elaine M. Randolph
Edwin J. Reid
Louis M. Roberts
Evelyn Rosa
Neil Sachnoff
Kamaladevi Sarveswaran
Saul Ewing LLP
William A. Solomon
Kathleen A. Zupic

Century Club (\$100+)

Anonymous
Frank T. Antisell
Felipe Aparicio
Aspenn Environmental
Services NJ, LLC
James A. Bakum
John Bakum
Steven Barnhart
Genevieve F. Basanaga
Hank Bauer
Cynthia A. Beam
Susan A. Bernstein
Marla D. Brinson
Christopher J. Buckley
Eileen E. Coakley
Kay L. Collins
Jean G. Columbo
Mary Ann B. Connors
Brenda M. Cooney
Cost Reduction Solutions
Anne C. Csabay
Margaret Cullen
Sally K. D'Aloisio
Robert K. Dalton
Antonia DaSilva
Zusette Dato
Walter DeAngelo
Louis O. Decker
Scott J. D'Elia
Michael Denes
Eric L. Derwid
Michele T. DiMura
Kasey Drennen
Andrew Dzurisin
El Patio Bar and Grill
Constance Ellis
Edward F. Every
Robert M. Fishco
Frankel Financial Corp.
Donna Marie Gardner
Anthony Gencarelli
General Electric - Matching Gifts
Lucian B. Golaszewski
Christine Harrington
Jeffrey T. Herron
Agnes A. Hirsch Frank
Hope-Claire Holbeck
Theresa T. Holt
Horiba Jobin Yvon Inc.
Robert J. Hughes
Frederick L. Hunter
Johnson & Johnson
Healthcare Products
David M. Kalb
Kayla And Company LLC

Lola S. Koniuszy
 Diane B. Lippert
 Viola Lordi-Karcic
 Mary Ann Lovas
 Deborah K. Lynch
 Magyar Bank
 Patricia A. Marrero
 Susan L. Mascola
 Max L. Brown Hardware Co., Inc.
 Dennis V. McNerney
 Middlesex County College,
 English Dept.
 Mattie H. McCarthy
 Terry C. McGlincy
 Kieson McKelvey
 Owen P. McKenna
 Miller Transportation Group
 John J. Murray
 Robert O'Donnell
 Joann V. O'Hara
 Theresa E. Orosz
 Joan D. Perugini
 Bonnie Petrauskas
 Plumbers & Pipefitters
 Local Union No. 9
 Charlotte Quaintance
 Peter Q. Rich
 Alberto Rivas
 Jonathan L. Rosario
 Frederick Rossol
 Jean Rossol
 Harry J. Russell
 Saint Peter's University Hospital
 Schweitzer Engineering Laboratories, Inc.
 George G. Shamy
 Francis E. Soloducha
 Mathew V. Spano
 Cathleen A. Speranza
 Summit Security Services
 Maria Vivian M. Tan-Glueck
 The Oxford Group Appraisal &
 Consultation Inc.
 Mark S. Thompson
 Thomas Tighe
 Helen D. Trippe
 Susan A. Troost
 Mohammed Ulislam
 John H. Van Glahn
 Arthur C. Vida
 Aretha Watson
 Dena Williams

Associate (up to \$99)

Thomas Abraham
 Nancy Abrams
 Juan Aguilera
 William H. Ainslie
 Deborah S. Alexander
 Jennifer Altman
 Iris X. Alvarez-Amaya
 Tehmina Anjum

William E. Armstrong
 George R. Bandics
 The Bank of New York Mellon
 Community Partnership
 Robert N. Beringer
 Anita D. Bier
 Christy Bitner
 Barbara Blegboh
 Roseann P. Bucciarelli
 Irene E. Buckelew-Varga
 Alice Burtnick
 Santi V. Buscemi
 Jim Cabanas
 Juana Canela
 Pamela Carringer
 Magaly Caruso
 Sandra E. Castro
 CCLAP Association LLC
 Albina J. Chismar
 Christina Cioch
 Ana Class-Rivera
 William Conklin
 Donna L. Coyle
 Elaine Cram
 Thomas G. Cullen
 David J. Cushman
 Kevin R. Dalina
 Pamela R. Danek
 Christina Dean
 Juan E. DeJesus
 Michelle Del Vecchio
 Robert D. Dell
 Ada Desmond
 Andrew DeTullio
 Helene M. Dilorio
 Norma Diaz
 Ann Breen Dickinson
 Dan D. Disario
 Carolyn H. Dittus
 Dorothy A. Doremus
 Danielle Dowling
 Donna Doyle
 Michael Driscoll
 Venetta K. Ellerbe
 Theodore B. Faley
 Kathy A. Fedorko
 Mary Figueroa
 Mary Pat Flannery
 Daniel Forney
 Donna M. Fountain
 Lorelei W. Francis
 Sally K. Fribley
 Lenore Friedman
 Linda G. Friedman
 Abner Garcia
 Shari Garretson
 Francine Garson
 Elaine Geczi
 Carol E. Gerondelis-Treptow
 Antonietta Gianfrancesco
 Albert M. Gomolka
 Fannie Gordon
 Karen Gormish

Patricia A. Graber
 Brenda Gray
 Barbara L. Greene
 Jossette V. Greene
 Michael Guarnieri
 Cynthia Hammell
 Carlos M. Hernandez
 Marisol C. Hernandez
 Kimberlee M. Hooper
 Paul D. Horta
 Barbara Hughes Holzhauser
 Pamela L. Hutton
 Kathleen Inacio
 Laura J. Irovando
 Angela J. Judus
 Denalerie Johnson
 Thomas Kaczmarek
 Vicki P. Kahn
 Suzanne R. Kalish
 Scarlett Kellermann
 Francine A. Krinsky
 Gary A. Kulhanjian
 William J. Labos
 Ralph Lattscaw
 Barbara A. Lavin
 Sara B. Lazarus
 C. M. LeBlond
 Barbara A. Lehman
 Joyce Lenner
 Dorothy E. Loper
 Lillian E. Lund
 Mary A. Lynch
 Joanna Maciorowska
 Gary Madriss
 Robert M. Magid
 Sheema Majiduddin
 Gina N. Marano
 Donna Marinelli
 Louis Marius
 Nicholas J. Martocci
 Leonard C. Maskin
 Jordan Matsudaira
 Michael J. McKenna
 Michele Menditto
 Frank Mento
 Amy G. Michael
 Middlesex County Public Employees
 Charitable Campaign
 Claudio Mir
 Henry J. Murphy
 Lakshmi Nagarajan-Iyer
 New Brunswick DVRT
 Jerome M. Olson
 Irene F. Pearse
 Janet Peleg
 Joellyn Perry-Powell
 Lori S. Pettit
 Lacey R. Plichta
 Joanne Pollman
 Frank S. Prybeck
 Ralph A. Pucci
 Maureen Radmore

Elliot Ramer
 Lazarus Ramos
 Kenneth J. Rex
 Robert M. Ring
 Nalda Rivera
 Anita Rosen
 Elizabeth A. Rosen
 Barbara L. Rosengarten
 Nilima Samant
 Rose Sandler
 Victor Sbailo
 William J. Schaeffer
 Martin E. Schamberger
 David F. Schlett
 Barry A. Scholnik
 Kathleen B. Shay
 Harry Shiner
 Dorna J. Silverman
 Adrienne Simmons Dennis
 Joseph Soos
 Chrsitopher Sopko
 James M. Sulva
 Carol A. Swerdel
 Judith Sy
 Nicholas Tancredi
 Brynda Taylor-Flynn
 Michael Tesselone
 The Palace Hotel
 Lucia Tillotson
 Holly D. Tremper
 Maxine Valunas
 Lisa L. Valvano
 Victor Vega
 Martha Y. Velez
 Thomas Vigna
 George Volk
 Jean Volk
 Laura Wallins
 Denise Watson
 Lewin Weyl
 Kimberly White
 Elinore Widis
 Wyeth-Ayerst
 Denise L. Wysocki
 Joseph Xerri
 Michael R. Yatauro
 Margarita Ysa
 Federico Zanatta
 Timothy Zeiss
 Catherine N. Zeller
 Robert Zifchak

All attempts are made to make this report as accurate as possible. If there is a discrepancy with your name, please notify the MCC Foundation office at 732.906.2564. Thank you.

FOUNDATION

Middlesex County College Foundation Legacy Society

Middlesex County College, the Middlesex County College Foundation and the Middlesex County College Alumni Association gratefully acknowledge those forward thinking benefactors who have planned a deferred or estate gift to benefit Middlesex County College students. Their generosity will assist future generations of students in achieving their academic goals.

Kathleen and Edmund O. Andich
Russell and Janet Baker
Dorothy A. Bitetto
Eleanor Carlucci
Albina J. Chismar
Elaine L. and Robert J. Ciatto
Lynn Davis

Joseph P. Gemmell
Ronald Goldfarb, JD
Paul and Dorothy Hilf
Joan Hochbaum
Jerome F. and Estelle Katcher
William C. Kleinelp, Jr.
Charles and Ruth Larsson

Patrick Madama
Gerald and Jo Aimee Ostrov
Nancy Y. and Guilford B. Peters
Sheryl Riddlestorffer
Jean Salerno
Betty Whalen

For information on establishing a legacy gift to Middlesex County College, please contact Veronica Clinton, Executive Director, Middlesex County College Foundation at 732.906.4661, vcClinton@middlesexcc.edu

Tribute Gifts to the Middlesex County College Foundation

In Memory of

In Memory of Debra M. Bakum

James A. Bakum
John Bakum
Xenia P. Balabkins
H. Wayne Brady
Maria DeLucia
Robert M. Fishco
Elaine Geczi
Ronald C. Goldfarb
Patricia A. Graber
Pamela C. Hedberg
Agnes A. Hirsch Frank
John A. Hoffman
Warren D. Kelemen
Jordan Matsudaira
Frederick P. Montana
Joan D. Perugini
Frederick Rossol
Jean Rossol
Kathleen B. Shay
Jerome Shindelman
Jean Volk
Robert Zifchak

In Memory of Gerald Braverman

Robert M. Fishco

In Memory of Mary Giamundo

Robert M. Fishco

In Memory of Carey Goldberg

Robert M. Fishco

In Memory of Olive Harris

Maria DeLucia

In Memory of Gladys Joyner

Robert M. Fishco

In Memory of Eileen Klegman

John A. Hoffman
Barbara A. Lehman
Laura Wallins
Elsevier Foundation – Matching Gifts

In Memory of Gerald A. Leviss

MCC English Dept.

In Memory of Donta' Jacquile Mickens

Pamella L. Hutton
Andrienne Simmons Dennis

In Memory of Herbert Miron

Barry A. Scholnik

In Memory of Nancy Mitnacht

Rose Cofone

In Memory of Karoly Nagy

H. Wayne Brady

In Memory of Damien Nuccio

Susan McColley

In Memory of Theodore R. Sandles

Jerome Shindelman

In Memory of Dorothy A. Schaeffer

William J. Schaeffer

In Memory of Irene Teichberg

Robert M. Fishco

In Memory of Mary E. Trickle-Kulesa

Mary E. Trickle

In Memory of Steven Van Cook

Maria DeLucia

In Memory of Arnold Weiner

Barbara L. Rosengarten

In Memory of Diane Z. Wilhelm

Barbara Berger
Gary A. Kulhanjian
Dorothy E. Loper
Irene F. Pearse
Jerome Shindelman

In Memory of Stella Wilson

Pamela C. Hedberg

In Memory of Shirley Zall

Johnson & Johnson Family of
Companies, Matching Gifts Program
Jayne C. Zall

In Honor of:

In Honor of Professor Janet Baker

Kathleen Shay
Pamela C. Hedberg
Kathy A. Fedorko

In Honor of Professor Elliot Pasternack

Jerome Shindelman

In Honor of Dr. Frank Spano

Pamela C. Hedberg

LEADERSHIP 2011-2012

Middlesex County Board of Chosen Freeholders

Christopher D. Rafano, *Freeholder Director*
Ronald G. Rios, *Deputy Director*
Carol Barrett Bellante
Stephen J. Dalina
H. James Polos
Charles E. Tomaro
Blanquita Valenti

Middlesex County College Board of Trustees

Dorothy K. Power, *Chairman*
Thomas Tighe, *Vice Chairman*
Mark J. Finkelstein, *Treasurer*
Hank Bauer, *Secretary*
Frank T. Antisell
Jean Brosnan-Barth '10
George J. Lisicki
John P. Mulkerin
Eileen Palumbo '78
Praful Raja
Robert P. Sica
Samuel B. Stewart

Administration

Joann La Perla-Morales, Ed.D., *President*
Karen L. Hays, Ph.D., *Vice President, Academic and Student Affairs*
Patrick Madama, *Vice President, Institutional Advancement*
Susan K. Perkins, *Vice President, Finance and Administration*
Donald R. Drost, Jr., *Executive Director, Facilities Management*
Neil S. Sachnoff, *Executive Director, Information Technology*

Middlesex County College Foundation Board of Trustees

Brian J. Daugherty, <i>Chairman</i>	Jerome F. Katcher
John V. Visceglia, Jr., <i>First Vice Chairman</i>	Joann La Perla-Morales
Barbara Bernard, <i>Second Vice Chairman</i>	Linda J. Landis
Brian F. Legg, <i>Treasurer</i>	Charles T. Larsson
Diane Conboy, <i>Assistant Treasurer</i>	Patrick Madama
Edmund O. Andich, <i>Secretary</i>	Michael A. Maroney, Jr. '80
Hank Bauer	Patrick McDermott
Genette Falk	John P. Mulkerin
Saul Fink	Susan Perkins
Karen Hays	James Sausmer
John J. Hogan	Mary E. Trickel '77
Samuel C. Inglese, Esq.	

Alumni Association Board of Trustees

William Egbert III '04, *President*
Albert Gomolka Jr., *Vice President*
Joann O'Hara '93, *Secretary*
Lacey Plichta '06, *Treasurer*
Dorothy Bitetto '69
Brenda Cooney '98
Louis E. Hoffman '85
Michaela Macauley '95
Michele Sutera '08
Helen Trippe '76
Douglas Wilson '93

NONPROFIT ORG.
U.S. POSTAGE
PAID
NEW BRUNSWICK, N.J.
PERMIT NO. 697

MIDDLESEX
C O U N T Y C O L L E G E

Institutional Advancement

2600 Woodbridge Avenue
P.O. Box 3050
Edison, New Jersey 08818-3050

